



AL MAJID INVESTMENTS GROUP



MASTERS OF WATERFRONT LIVING



MARSA AL ARAB TOWER
برج مرسى العرب

Sharjah / Al Khan / Al Hind Tower / Sales Center | 31 Floor

Al Khan, Sharjah

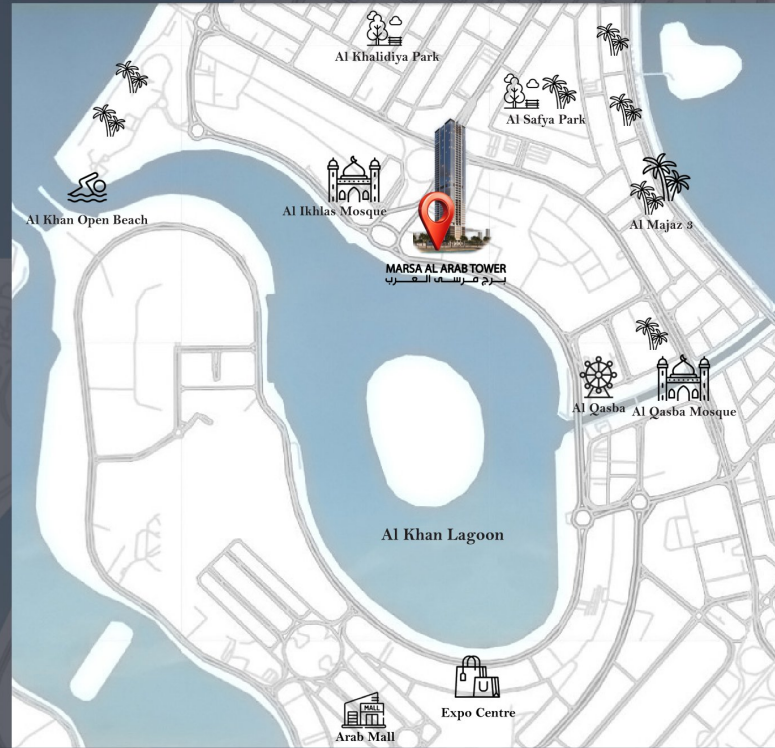
Marsa Al Arab Tower located on Al Khan Lagoon, Sharjah, UAE. This residential haven offers breathtaking views and its innovative design perfectly blends modern elegance with the natural beauty of its surroundings. Ensuring residents an experience of harmonious lifestyle that is both inspiring and serene.





Where *Elegance*
Touches *The Sky*

Marsa Al Arab Tower represents more than just a place to live, this 48-storey residential masterpiece designed with exceptional fineness to offer a selection of 240 meticulously crafted 2, and 3-bedroom apartments.



-
-
-
-
-
-
-
-
-
-
-
-
-
-
-
-
-
-
-
-
-
-
-
-
-
-
-
-
-
-
-
-
-
-
-
-
-
-
-
-
-
-
-
-
-
-
-
-
-
-
-
-
-
-
-
-
-
-
-
-
-
-
-
-
-
-
-
-
-
-
-
-
-
-
-
-
-
-
-
-
-
-
-
-
-
-
-
-
-
-
-
-
-
-
-
-
-
-
-
-
-
-
-
-
-
-
-
-
-
-
-
-
-
-
-
-
-
-

A WORLD
WITHIN
YOUR
HOME





FACILITIES

RESIDENTIAL



40 Residential Floors



2, 3 Bedroom Apartments



240 Residential Units



6 Apartments Per Floor



2 Parking Spaces for 3 Bedroom Apartments
1 Parking Space for 2 Bedroom Apartments

COMMERCIAL



2 Shops

AMENITIES



Outdoor Kids and Adults Swimming Pool



Fully Equipped Spacious and Separate Gymnasium for Gents and Ladies



Indoor and Outdoor Kids Play Area



Large Spaced Musallah



5-Star Hotel Entrance Lobby



Outdoor Lounge Area



24/7 Facility Management



24/7 Security

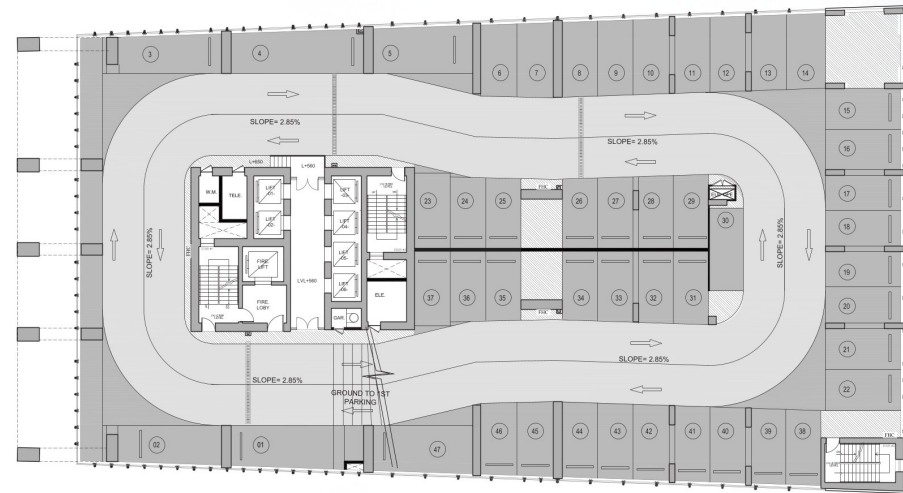


6 Multi-Storey Parking Floors

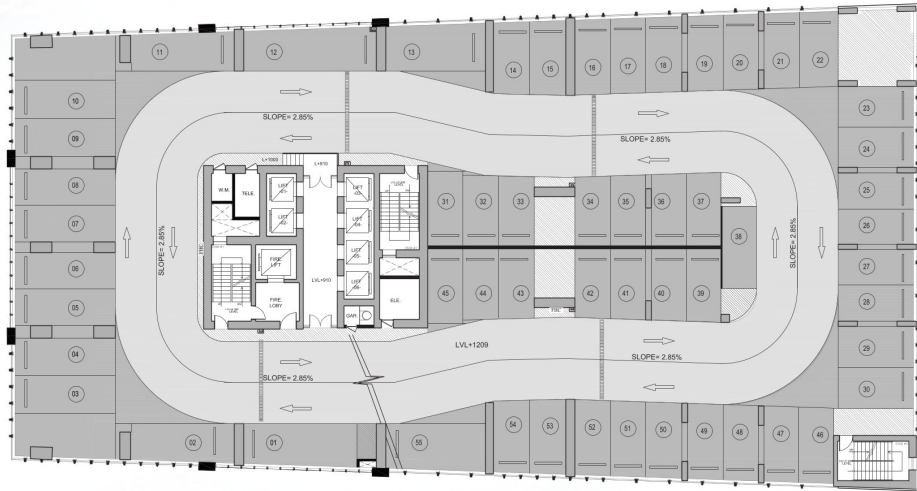
GROUND FLOOR



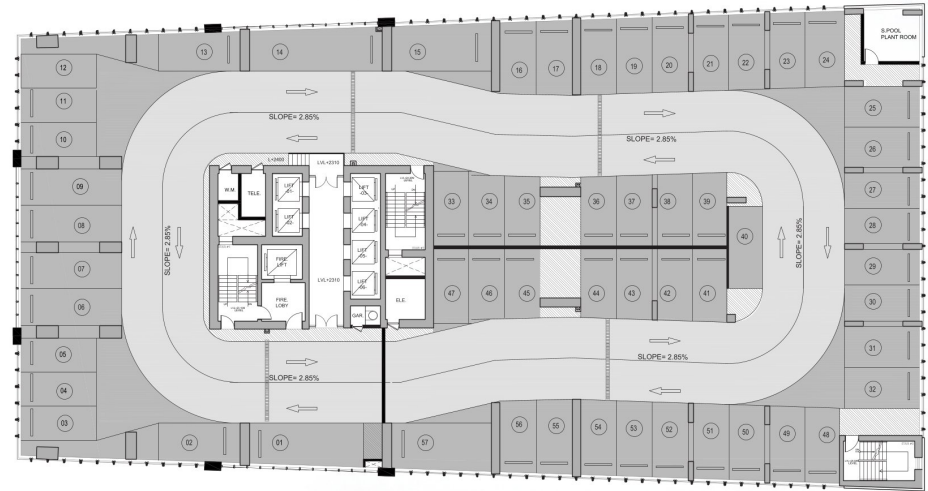
1st PARKING FLOOR



2nd - 5th PARKING FLOOR



6th PARKING FLOOR



SPACIOUS
Living

DESIGNED FOR YOUR
ULTIMATE
RELAXATION





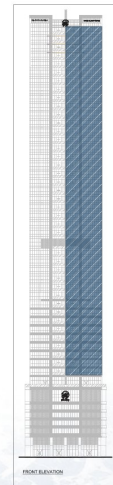
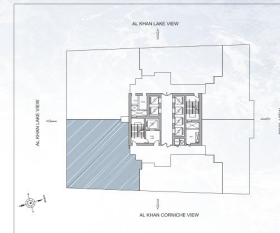
Flat 1 : Living Room

DISCLAIMER : Plans, details, units and orientation included are indicative only. All images including features, finishes, furnishings and scale are illustrative only. Final areas, orientations, dimensions, layout and material may differ from those stated.

FLAT 1

TOTAL SIZE : 308.68 SQM | 3322.60 SQFT

TOTAL APARTMENTS : 40 UNITS



TYPE 1 : FLOORS : 2nd - 16th | 18th - 42nd

DISCLAIMER : Plans, details, units and orientation included are indicative only. All images including features, finishes, furnishings and scale are illustrative only. Final areas, orientations, dimensions, layout and material may differ from those stated.



Flat 1 : Bedroom 1

DISCLAIMER: Plans, details, units and orientation included are indicative only. All images including furniture, fixtures and finishes shown on this scale are illustrative only. Final areas, orientations, dimensions, layout and material may differ from the actual construction.



Flat 2: Living Room and Dining Space

DISCLAIMER: Plans, details, units and orientation included are indicative only. All images including features, finishes, furnishings and scale are illustrative only. Final areas, orientations, dimensions, layout and material may differ from those stated.



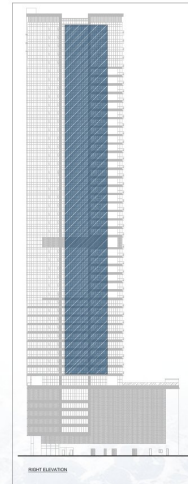
Flat 2 : Master Bedroom

DISCLAIMER : Plans, details, units and orientation included are indicative only. All images including features, finishes, furnishings and scale are illustrative only. Final areas, orientations, dimensions, layout and material may differ from those stated.

FLAT 2

TOTAL SIZE : 172.79 SQM | 1859.90 SQFT

TOTAL APARTMENTS : 40 UNITS



TYPE 2 : FLOORS : 2nd - 16th | 18th - 42nd

DISCLAIMER : Plans, details, units and orientation included are indicative only. All images including features, finishes, furnishings and scale are illustrative only. Final areas, orientations, dimensions, layout and material may differ from those stated.



Flat 3 - Living Room and Dining Space

DISCLAIMER: Plans, details, units and orientation included are indicative only. All images including features, finishes, furnishings and scale are illustrative only. Final areas, orientations, dimensions, layout and material may differ from those stated.



Flat 3 : Master Bedroom

DISCLAIMER : Plans, details, units and orientation included are indicative only. All images including features, finishes, furnishings and scale are illustrative only. Final areas, orientations, dimensions, layout and material may differ from those stated.

FLAT 3

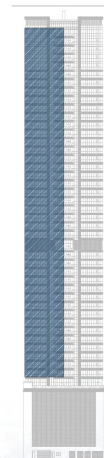
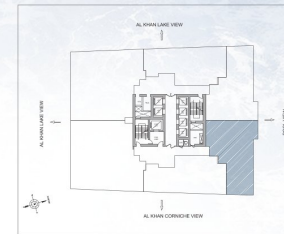
TOTAL SIZE : 188.37 SQM | 2027.60 SQFT

TOTAL APARTMENTS : 40 UNITS



TYPE 3 : FLOORS : 2nd - 16th | 18th - 42nd

DISCLAIMER : Plans, details, units and orientation included are indicative only. All images including features, finishes, furnishings and scale are illustrative only. Final areas, orientations, dimensions, layout and material may differ from those stated.



MARKER ELEVATION



Flat 4 : Kitchen

DISCLAIMER : Plans, details, units and orientation included are indicative only. All images including features, finishes, furnishings and scale are illustrative only. Final areas, orientations, dimensions, layout and material may differ from those stated.

FLAT 4

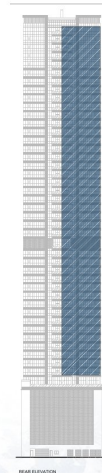
TOTAL SIZE : 188.37 SQM | 2027.60 SQFT

TOTAL APARTMENTS : 40 UNITS



TYPE 3 : FLOORS : 2nd - 16th | 18th - 42nd

DISCLAIMER : Plans, details, units and orientation included are indicative only. All images including features, finishes, furnishings and scale are illustrative only. Final areas, orientations, dimensions, layout and material may differ from those stated.



REAR ELEVATION



Flat 5 - Living Room and Dining Space

DISCLAIMER: Plans, sections, units and elevations included are indicative only. All images including furniture, fixtures, fittings and scales are illustrative only. Final design, construction, dimensions, layout and material may differ from those stated.



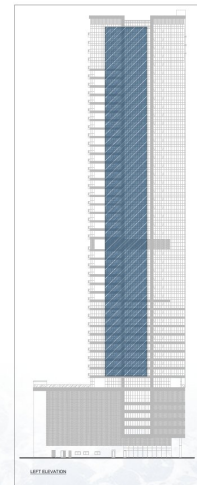
Flat 5 : Bedroom 1

DISCLAIMER : Plans, details, units and orientation included are indicative only. All images including features, finishes, furnishings and scale are illustrative only. Final areas, orientations, dimensions, layout and material may differ from those stated.

FLAT 5

TOTAL SIZE : 172.79 SQM | 1859.90 SQFT

TOTAL APARTMENTS : 40 UNITS



TYPE 2 : FLOORS : 2nd - 16th | 18th - 42nd

DISCLAIMER : Plans, details, units and orientation included are indicative only. All images including features, finishes, furnishings and scale are illustrative only. Final areas, orientations, dimensions, layout and material may differ from those stated.



Flat 6 : Kitchen

DISCLAIMER - Plans, details, units and orientation included are indicative only. All images are for illustrative purposes, finishes, furnishings and scale are illustrative only. Final areas, orientations, dimensions, layout and material may differ from those stated.



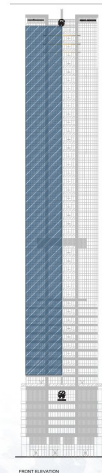
Flat 6 : Master Bedroom

DISCLAIMER : Plans, details, units and orientation included are indicative only. All images including features, finishes, furnishings and scale are illustrative only. Final areas, orientations, dimensions, layout and material may differ from those stated.

FLAT 6

TOTAL SIZE : 308.68 SQM | 3322.60 SQFT

TOTAL APARTMENTS : 40 UNITS



TYPE 1 : FLOORS : 2nd - 16th | 18th - 42nd

DISCLAIMER : Plans, details, units and orientation included are indicative only. All images including features, finishes, furnishings and scale are illustrative only. Final areas, orientations, dimensions, layout and material may differ from those stated.





CONTACT US

AL MAJID INVESTMENTS GROUP

Sharjah / Al Khan / Al Hind Tower / Sales Center
31 Floor

 +971 500001199

 Info@almajidinvestments.com

 almajidinvestmentsgroup.ae

